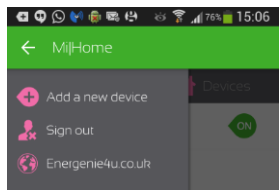
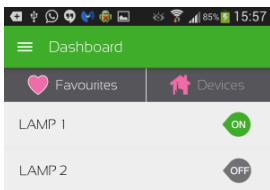


## Quick Start Guide – MiHome Control Adapter

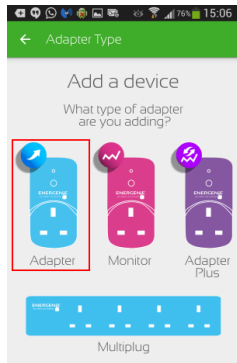
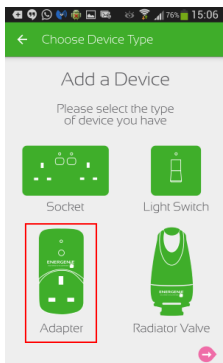
To pair the socket with your Gateway you will need to have already installed the Mihome *app* on your Android or Apple smartphone and registered your Gateway.

Step one - open the MiHome App.

Step two – select the *Dashboard* and *Add a new device* as below.



Step three – select the *Adapter* icon then the blue *Adapter* icon that appear, as below.



Step four – plug the adapter into a powered mains socket and then follow the further instructions that appear.

The adapter may also be paired from any browser via the MiHome server at [mihome4u.co.uk](http://mihome4u.co.uk). For more help, look online at [mihome4u.co.uk/troubleshooting](http://mihome4u.co.uk/troubleshooting) where you can download a more comprehensive guide or contact us at [support@mihome4u.co.uk](mailto:support@mihome4u.co.uk)

## Safety Notice

THIS DEVICE AND ASSOCIATED SOFTWARE ARE NOT DESIGNED, MANUFACTURED OR INTENDED FOR USE OR RESALE FOR THE OPERATION OF NUCLEAR FACILITIES, THE NAVIGATION, CONTROL OR COMMUNICATION SYSTEMS FOR AIRCRAFT OR OTHER TRANSPORTATION, AIR TRAFFIC CONTROL, LIFE SUPPORT OR LIFE SUSTAINING APPLICATIONS, WEAPONS SYSTEMS, OR ANY OTHER APPLICATION IN A HAZARDOUS ENVIRONMENT, OR REQUIRING FAIL-SAFE PERFORMANCE, OR IN WHICH THE FAILURE OF PRODUCTS COULD LEAD DIRECTLY TO DEATH, PERSONAL INJURY, OR SEVERE PHYSICAL OR ENVIRONMENTAL DAMAGE (COLLECTIVELY, "HIGH RISK APPLICATIONS"). YOU AGREE AND ACKNOWLEDGE THAT YOU HAVE NO LICENSE TO, AND SHALL NOT (AND SHALL NOT ALLOW A THIRD PARTY TO) USE THE PRODUCT IN ANY HIGH RISK APPLICATIONS, AND WHERE PERMITTED BY LAW SANDAL PLC SPECIFICALLY DISCLAIMS ANY WARRANTY REGARDING, AND ANY LIABILITY ARISING OUT OF, HIGH RISK APPLICATIONS.

### Copyright Notice

© 2015 Sandal Plc.

### Quickstart Guide

Part no: MIH0002



Energenie and MiHome are brand names of Sandal Plc.  
Reg. Office: Claremont House, Deans Court, Bicester, Oxon, OX26 6BW