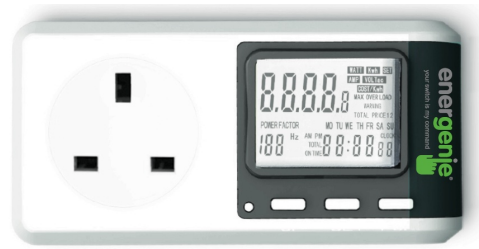


# Energy Saving Power Meter



The **Energy Saving Power Meter** will measure the energy use (and calculate costs) of running household appliances. This helps you lower your power bill and reduce carbon emissions, as you discover which appliances are the worst energy offenders and then work out ways to limit their use.

## Installation

Plug in the power lead of your appliance and plug the meter into a mains wall socket and ensure the socket is switched on.

## Operation

Use the buttons on the Power Meter to configure and select the display mode i.e. power, voltage, current, accumulated electricity usage, running cost, current time

### GENERAL FEATURES

1. Display current clock in 12 or 24 hour mode.
2. Display mains voltage in volts.
3. Display mains frequency in Hz.
4. Display current being consumed in amps.
5. Display appliance power being consumed in watts.
6. Display peak power consumption detected in watts.
7. Display accumulated total electricity consumed in kilowatt-hours (kWh).
7. Display cost of accumulated total electricity consumed.
8. Display the total cost on time.
9. Display carbon footprint in Kg of CO<sub>2</sub>
10. Display power factor.
11. Adjustable maximum overload current.
12. Display maximum overload current warning.
13. Adjustable price for kilowatt-hour units of electricity
14. Set up combinations of days or blocks of days.

### DATA DISPLAY

Press the FUNC button to display:

VOLTS→AMPS→WATTS→MAX WATTS→TOTAL kWh→TOTAL CO<sub>2</sub>→TOTAL PRICE, TOTAL ON TIME→VOLTS.



### Key Definitions

**MASTER CLEAR:** Reset to factory settings.

**UP and SET:** Change settings.

**FUNC:** Change display.

Voltage: 240V ac 50Hz

Maximum current: 13A

Maximum load: 3120W

Typical power consumption: <0.5W

Product Code: ENER007

### Measuring Ranges:

Voltage 200-276V AC, +/-0.5%

Current range 0.005-16A, +/-0.5%

Power range 0.1-3680W, +/-0.5%

Accumulative electricity usage range 0 -9999.9 kWh

Frequency range 45-65Hz

Clock accuracy +/- 1 minute per month

Internal rechargeable, non-replaceable battery

For indoor use only.

RoHS compliant

If you have questions, please visit us online at [www.energenie4u.co.uk](http://www.energenie4u.co.uk)

### WARNING!

Do not plug two or more meters together!

Indoor use only!

Position the energy meter so that it is difficult to disconnect it from the supply!

### IMPORTANT

Don't plug in an appliance where the load exceeds 13 Amp. Always ensure the plug of any appliance is fully inserted into the meter outlet. If cleaning of the meter is required, remove from mains power and wipe the meter casing with a dry cloth.

## DATA DISPLAY

Press the FUNC button to display successively:

VOLTS→AMPS→WATTS→MAX WATTS→TOTAL KWh→TOTAL CO<sub>2</sub>→TOTAL PRICE, TOTAL ON TIME→VOLTS.

1. The meter will display current clock, mains voltage and mains frequency when plugged in initially.
  2. Press FUNC to display current clock, mains current and power factor.
  3. Press FUNC again to display current clock, real power and power factor.
  4. Press FUNC again to display max. line power and the time of max. line power and also the power factor. Press and hold the FUNC button for 5 seconds during this state to reset the max. line power display.
  5. Press FUNC again to display the current clock, the total accumulated power and power factor.
  6. Press FUNC again to display the current clock and the total accumulated CO<sub>2</sub> in Kg and the power factor.
  7. Press FUNC again to display the total accumulated on time and the total accumulated electricity cost for price1 and price2.
  8. Press FUNC again and the meter will return to display the current time and mains voltage.
- If the total electricity usage or total electric cost overflows, the OVER indication will flash.

## SETTING THE CURRENT CLOCK

1. Press FUNC until the CLOCK displays.
2. Press SET once. WEEK DAY will flash. Press UP until the required WEEK DAY value has been selected.
3. Press SET again. The HOUR digit will flash. Press UP until the required HOUR value has been selected.
4. Press SET again. The MINUTE digits will flash. Press UP until the required MINUTE value has been selected.
5. Press SET again to revert to CLOCK display mode.
6. Press UP while the CLOCK is being displayed to toggle between 12 and 24 hour display mode.

## SETTING kWh cost & OVERLOAD CURRENT

Press and hold the FUNC button for 5 seconds when displaying mains voltage, line current or power. \*

1. To set Price 1:

- a. Press SET. The first COST/kWh digit will flash. Press UP until the required value has been selected.
- b. Press SET again. The second COST/kWh digit will flash. Press UP until the required value has been selected.
- c. Press SET again. The third COST/kWh digit will flash. Press UP until the required value has been selected.
- d. Press SET again. The fourth COST/kWh digit will flash. Press UP until the required value has been selected.
- e. Press SET again. COST/kWh will flash. Press UP until the required value has been selected.
- f. Press SET again. The weekday will flash. Press UP to select combination required.
- g. Press SET again. The ON TIME hour digit will flash. Press UP until the required value has been selected.
- h. Press SET again. The ON TIME minute digit will flash. Press UP until the required value has been selected.

2. To set Price 2:

Press FUNC button again after Setting price 1. Repeat above steps for price 2.

3. Setting the OVERLOAD CURRENT threshold:

Press FUNC button after setting price 2.

- a. Press SET. The first OVERLOAD CURRENT digit will flash. Press UP until the required value has been selected.
  - b. Press SET again. The second OVERLOAD CURRENT digit will flash. Press UP until the required value has been selected.
  - c. Press SET again. The third OVERLOAD CURRENT digit will flash. Press UP until the required value has been selected.
  - d. Press SET again. The fourth OVERLOAD CURRENT digit will flash. Press UP until the required value has been selected.
- Press and hold FUNC to return to normal display mode.

The OVERLOAD WARNING display will flash continuously when the current drawn by a plugged in appliance exceeds the maximum OVERLOAD CURRENT threshold.

Unplug the appliance to return to normal display mode. You may then wish to change the maximum OVERLOAD CURRENT value.

## STAND BY MODE

The LCD will be blanked out when not plugged in and not in use for a period of 10 seconds. Pressing any key will bring back the display.

\* The start time for price 2 will be the stop time for price 1, consequently, the start time for price 1 will be the stop time for price 2.

**To Reset to Factory Settings:** Use a non-metallic pointed item to press and hold the reset button adjacent to the UP button for 3 seconds.